

LEGEND	
▲	Survey Station
○	Site Manhole / Inspection Cover
○	Circular Manhole / Inspection Cover
□	RT Utility Chamber
□	Comms Cabinet
○	Manhole
●	TP - Tall pole
●	EP - Edge pole
●	LP - Lamp Column
●	Gas valve
●	WM - Water Meter
●	SV - Water Stop Valve
●	RS - Road Signs
○	HT - Fire Hydrant
○	G - Road Gully
○	Ticket machine
○	Substation call button post
○	FB - Pillar box
□	Bench marking
—	Overhead electricity
—	Plasters - PL
—	Top embankment
—	Bottom embankment
—	Termo. Slope/s Surface change
—	Services Excavation Scar
—	Tarmac paving
—	Crack barrier fencing
—	Post & wire fencing
—	Concrete paving
—	Block paving



9A Tankerville Place Jesmond Newcastle upon Tyne NE2 3AT
07773991474
admin@woodsm-an-arb.co.uk
www.woodsm-an-arb.co.uk

Arbicultural Constraints Assessment
Arbicultural Constraints Plan

Trees Shown On Current Site Layout

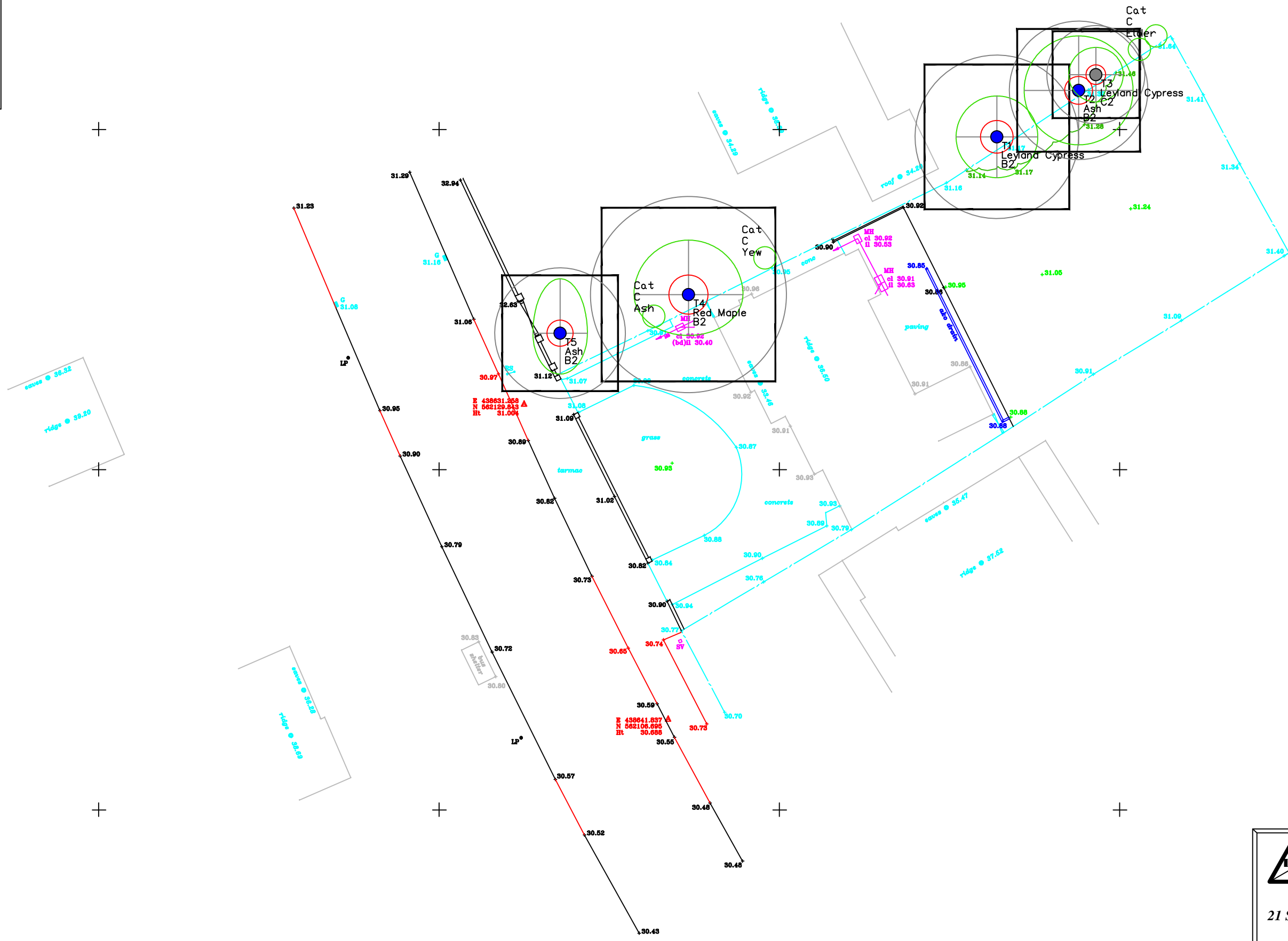
21 Sunderland Road
For Fitz Architects

Drawing Number:
ACP.21SunderlandRoad.No.1
Edited Jim Richardson 10/08/2015
Scale 1:200 @ A1
Revisions:
Based on Original Plan: 21 Sunderland Road - Cleadon

Key

	Tree Number
	Tree Name
	Tree Category
	1 - Tree - No. range 01 - Small Tree
	2 - Tree - No. range 02 - Medium Tree
	3 - Tree - No. range 03 - Large Tree
	4 - Tree - No. range 04 - Very Large Tree
	5 - Tree - No. range 05 - Ancient Tree
	6 - Tree - No. range 06 - Ancient Tree
	7 - Tree - No. range 07 - Ancient Tree
	8 - Tree - No. range 08 - Ancient Tree
	9 - Tree - No. range 09 - Ancient Tree
	10 - Tree - No. range 10 - Ancient Tree
	11 - Tree - No. range 11 - Ancient Tree
	12 - Tree - No. range 12 - Ancient Tree
	13 - Tree - No. range 13 - Ancient Tree
	14 - Tree - No. range 14 - Ancient Tree
	15 - Tree - No. range 15 - Ancient Tree
	16 - Tree - No. range 16 - Ancient Tree
	17 - Tree - No. range 17 - Ancient Tree
	18 - Tree - No. range 18 - Ancient Tree
	19 - Tree - No. range 19 - Ancient Tree
	20 - Tree - No. range 20 - Ancient Tree
	21 - Tree - No. range 21 - Ancient Tree
	22 - Tree - No. range 22 - Ancient Tree
	23 - Tree - No. range 23 - Ancient Tree
	24 - Tree - No. range 24 - Ancient Tree
	25 - Tree - No. range 25 - Ancient Tree
	26 - Tree - No. range 26 - Ancient Tree
	27 - Tree - No. range 27 - Ancient Tree
	28 - Tree - No. range 28 - Ancient Tree
	29 - Tree - No. range 29 - Ancient Tree
	30 - Tree - No. range 30 - Ancient Tree
	31 - Tree - No. range 31 - Ancient Tree
	32 - Tree - No. range 32 - Ancient Tree
	33 - Tree - No. range 33 - Ancient Tree
	34 - Tree - No. range 34 - Ancient Tree
	35 - Tree - No. range 35 - Ancient Tree
	36 - Tree - No. range 36 - Ancient Tree
	37 - Tree - No. range 37 - Ancient Tree
	38 - Tree - No. range 38 - Ancient Tree
	39 - Tree - No. range 39 - Ancient Tree
	40 - Tree - No. range 40 - Ancient Tree
	41 - Tree - No. range 41 - Ancient Tree
	42 - Tree - No. range 42 - Ancient Tree
	43 - Tree - No. range 43 - Ancient Tree
	44 - Tree - No. range 44 - Ancient Tree
	45 - Tree - No. range 45 - Ancient Tree
	46 - Tree - No. range 46 - Ancient Tree
	47 - Tree - No. range 47 - Ancient Tree
	48 - Tree - No. range 48 - Ancient Tree
	49 - Tree - No. range 49 - Ancient Tree
	50 - Tree - No. range 50 - Ancient Tree
	51 - Tree - No. range 51 - Ancient Tree
	52 - Tree - No. range 52 - Ancient Tree
	53 - Tree - No. range 53 - Ancient Tree
	54 - Tree - No. range 54 - Ancient Tree
	55 - Tree - No. range 55 - Ancient Tree
	56 - Tree - No. range 56 - Ancient Tree
	57 - Tree - No. range 57 - Ancient Tree
	58 - Tree - No. range 58 - Ancient Tree
	59 - Tree - No. range 59 - Ancient Tree
	60 - Tree - No. range 60 - Ancient Tree
	61 - Tree - No. range 61 - Ancient Tree
	62 - Tree - No. range 62 - Ancient Tree
	63 - Tree - No. range 63 - Ancient Tree
	64 - Tree - No. range 64 - Ancient Tree
	65 - Tree - No. range 65 - Ancient Tree
	66 - Tree - No. range 66 - Ancient Tree
	67 - Tree - No. range 67 - Ancient Tree
	68 - Tree - No. range 68 - Ancient Tree
	69 - Tree - No. range 69 - Ancient Tree
	70 - Tree - No. range 70 - Ancient Tree
	71 - Tree - No. range 71 - Ancient Tree
	72 - Tree - No. range 72 - Ancient Tree
	73 - Tree - No. range 73 - Ancient Tree
	74 - Tree - No. range 74 - Ancient Tree
	75 - Tree - No. range 75 - Ancient Tree
	76 - Tree - No. range 76 - Ancient Tree
	77 - Tree - No. range 77 - Ancient Tree
	78 - Tree - No. range 78 - Ancient Tree
	79 - Tree - No. range 79 - Ancient Tree
	80 - Tree - No. range 80 - Ancient Tree
	81 - Tree - No. range 81 - Ancient Tree
	82 - Tree - No. range 82 - Ancient Tree
	83 - Tree - No. range 83 - Ancient Tree
	84 - Tree - No. range 84 - Ancient Tree
	85 - Tree - No. range 85 - Ancient Tree
	86 - Tree - No. range 86 - Ancient Tree
	87 - Tree - No. range 87 - Ancient Tree
	88 - Tree - No. range 88 - Ancient Tree
	89 - Tree - No. range 89 - Ancient Tree
	90 - Tree - No. range 90 - Ancient Tree
	91 - Tree - No. range 91 - Ancient Tree
	92 - Tree - No. range 92 - Ancient Tree
	93 - Tree - No. range 93 - Ancient Tree
	94 - Tree - No. range 94 - Ancient Tree
	95 - Tree - No. range 95 - Ancient Tree
	96 - Tree - No. range 96 - Ancient Tree
	97 - Tree - No. range 97 - Ancient Tree
	98 - Tree - No. range 98 - Ancient Tree
	99 - Tree - No. range 99 - Ancient Tree
	100 - Tree - No. range 100 - Ancient Tree

©Woodsm-an Arbicultural Consultancy
Drawing produced in colour - monochrome re-productions should not be accepted.
All rights reserved. This drawing should not be reproduced without prior written permission. Do not scale from drawing. All dimensions to be verified on site. Discrepancies, omissions or ambiguities in dimensions, tree positioning or other information used in this drawing, or the accompanying report should be reported to Woodsm-an Arbicultural Consultancy for clarification.



DAVID BRIEN SURVEYING Ltd
57 PARK LEA, SUNDERLAND, SR3 3SZ
Tel: 0191 5202691 email: davidbrien@sky.com

21 SUNDERLAND RD - CLEADON

Scale: 1:1 metric - 1:200 @ A1 - (2D POINTS)
Date: June 2015
Datum: Ordnance Survey Origins